

Selection Process

The recruitment/testing process is governed by Civil Service rules and regulations. Entry-level applicants are invited to participate in a written exam, a physical standards exam administered by publicsafetytesting.com, and an oral interview panel conducted by the City of Longview. Entry-level candidates passing all three testing phases will be placed on an eligibility list. Lateral candidates may apply directly and will complete a physical standards exam and an oral interview conducted by the City of Longview. All candidates on an established eligibility list will be considered further based on the Civil Service "Rule of Three." Additional screening, including background investigation, CVSA, psychological and medical evaluation, will be done after conditional offers of employment are made. Upon successful completion of all department screenings, the employee will be placed in a probationary status for 12 months.

Requesting Employment Information

If you meet entry-level requirements for this position, we invite you to test through the Public Safety Testing website at publicsafetytesting.com.

Lateral candidates are invited to apply directly with a City of Longview application which is available on our website at www.mylongview.com.

Additional Information

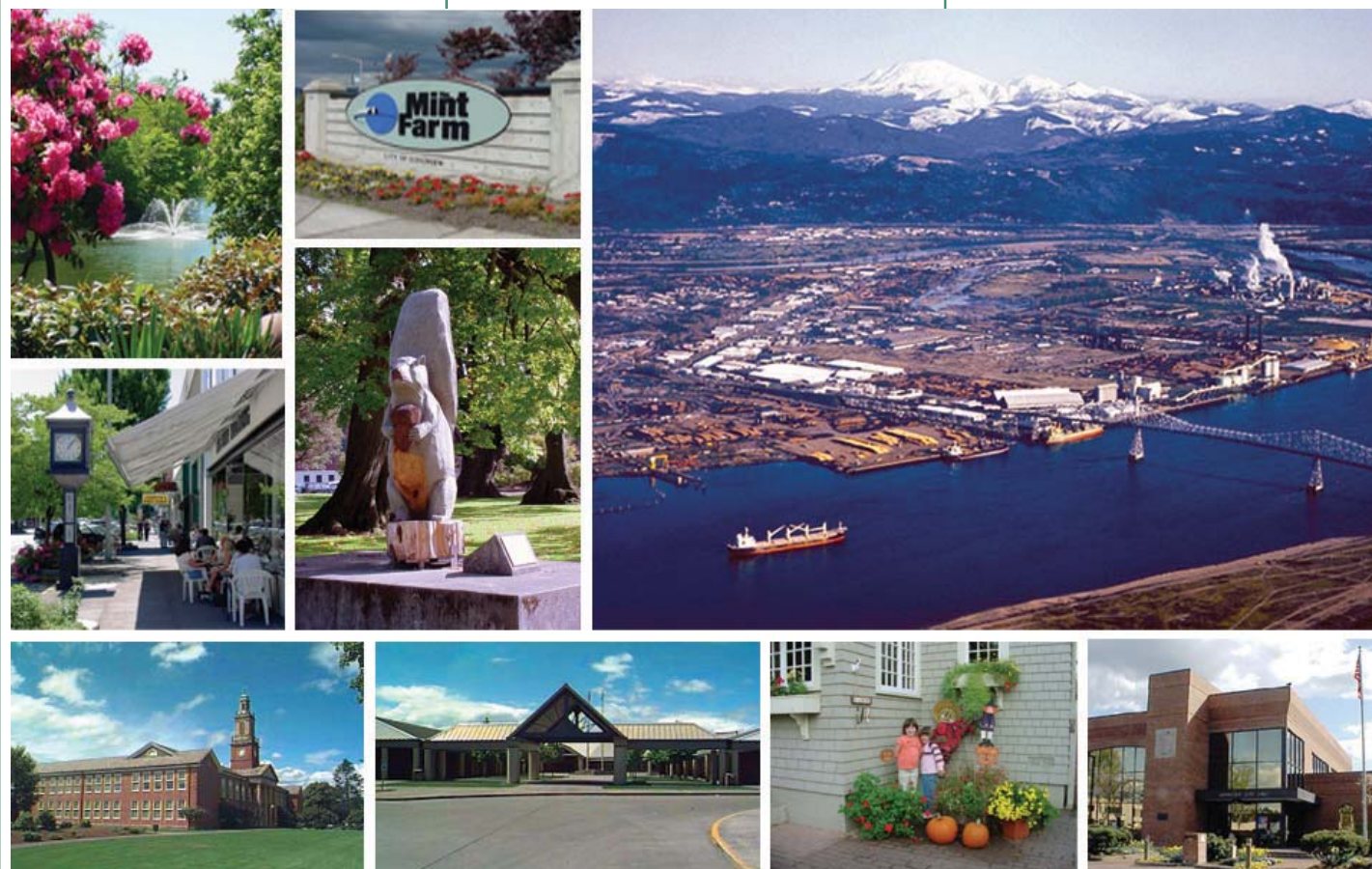
Please visit our website at www.mylongview.com to learn more about Longview. If you have questions, please contact:

Ning Fisher
Civil Service Secretary/Examiner
 City of Longview
 PO Box 128
 Longview, WA 98632-7080
 (360) 442.5025
 email: ning.fisher@ci.longview.wa.us

Equal Opportunity Employer

Because the City of Longview values diversity in the workplace, people of all ethnic backgrounds, persons with disabilities, and veterans are encouraged to apply for employment opportunities.

In accordance with the American's with Disabilities Act, reasonable accommodation for persons with disabilities will be provided to participate in the application and selection process, if requested. Please notify the Human Resources Department about the accommodation needed, preferably at the time of application, but at least two days prior to the date needed.



Police Officer

A Career Opportunity from the City of Longview

The Police Officer provides first line duty in the protection of life and property of the citizens of the community including the enforcement of laws and ordinances, the preservation of the peace, apprehension of criminals, control of noncriminal conduct and the application of services to the community. Police protection is provided by the City 24 hours a day.



Individual officers may be assigned to a 10 or 9 hour shift depending on assignment. After initial assignment to the Patrol Division, officers are eligible for the following assignments:

- ◆ Detectives
- ◆ Street Crimes Unit
- ◆ SWAT Team
- ◆ K-9 Unit
- ◆ Field Training Program
- ◆ School Resource Officers
- ◆ Narcotics Task Force
- ◆ Traffic Enforcement Unit
- ◆ Community Policing

Additional training is provided for speciality assignments. Promotions within the department are based on competitive civil service examinations. Officers who are placed as laterals may test for promotional opportunities after two years of service with the Longview Police Department.

The Longview Police Department

Longview Police Department provides services to the community through its three divisions:

- ◆ **Patrol** - The Patrol Division provides protection and service to the city of Longview 24 hours a day, seven days a week. This division is responsible for the School Officer Program, Police Reserves, Traffic Enforcement, K-9, and Community Service Officers.
- ◆ **Investigations** - This division is responsible for follow-up on most reported felony offenses like homicide, robbery, assault and sex crimes. Included in this division are the Street Crimes Unit, Narcotics Task Force, and the Lower Columbia SWAT Team.
- ◆ **Administration** - The Administrative Services Division is responsible for much of the day-to-day operations of the Longview Police Department, including providing administrative support. This division also recruits and supervises volunteers for the department.

**Longview Police Department
 Mission Statement**
 "A safe community
 through excellence in law
 enforcement."

Candidate Entry Requirements

All applicants must be 21 years of age or older at the time of appointment; have a valid motor vehicle driver's license; and be a U.S. citizen and have at least one year of college (30 semester hours or 45 quarter hours).

Lateral applicants must also have at least one year experience as a full-time commissioned police officer; have successfully completed a state certified law enforcement academy and have been employed as a sworn law enforcement officer during the past 12 months, if not currently employed as a law enforcement officer.

Law enforcement experience may be considered in lieu of this one year requirement for college course work for lateral applicants only.

Compensation and Benefits

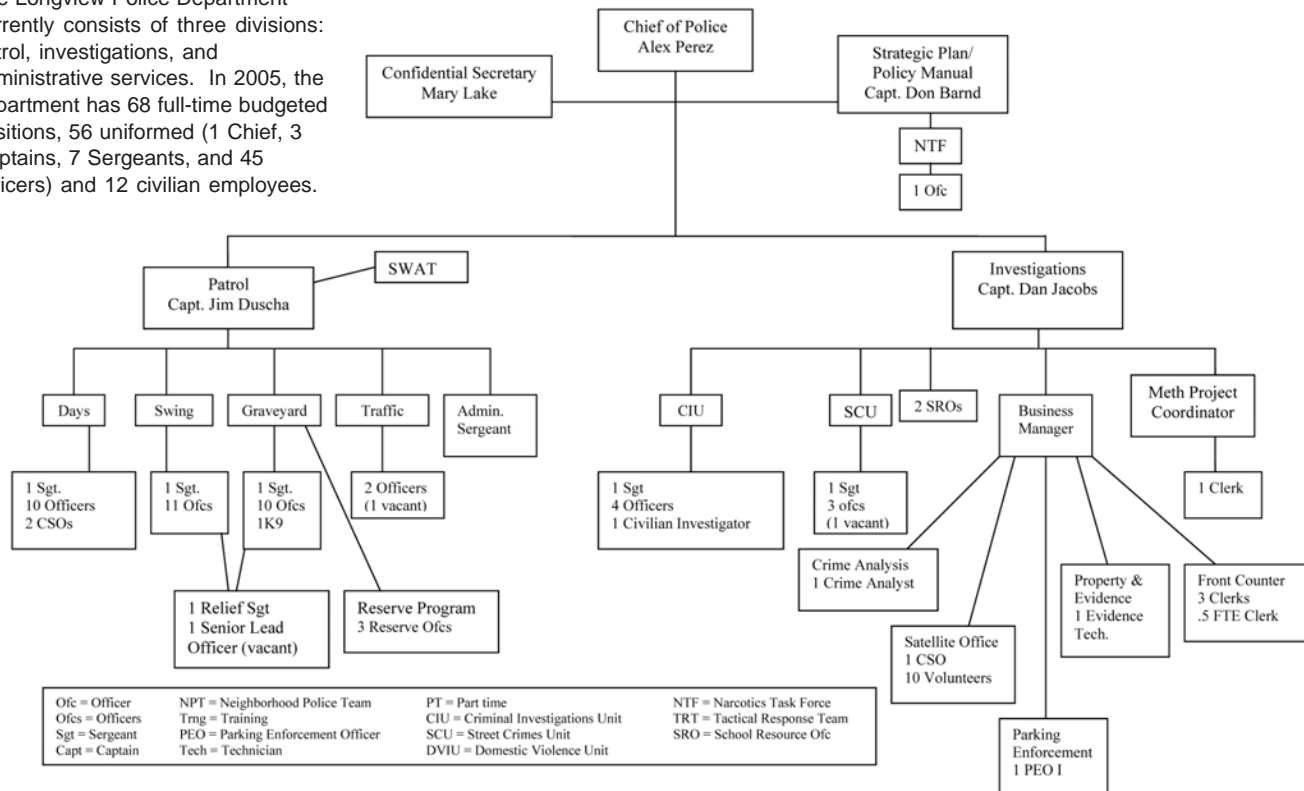
The City provides a comprehensive benefits package that is predominantly employer paid for full family coverage, which includes medical, dental, vision, long-term disability and life insurance.

The position of police officer is a union represented position with a current salary range of \$4,345-\$6,014/month. Other benefits include annual paid leave based on number of years of service in the department (136-288 annual hours), sick leave, holiday pay, insurance benefits (including, LTD, life, medical and dental insurance), Washington State Law Enforcement & Firefighters Retirement Plan, educational incentive pay, bilingual pay, uniform and equipment provided. Other optional voluntary benefits available include 457 deferred compensation plan, and additional life insurance for employee and dependents.



Organization Chart of the Longview Police Department

The Longview Police Department currently consists of three divisions: patrol, investigations, and administrative services. In 2005, the department has 68 full-time budgeted positions, 56 uniformed (1 Chief, 3 Captains, 7 Sergeants, and 45 Officers) and 12 civilian employees.



City of Longview Government

Longview is a modern Non-charter Code City governed under the Council-Manager form of government. Under the laws of the State of Washington, status as a Non-charter Code City confers home-rule authority upon a municipality. We have an elected seven-member City Council and an appointed City Manager. The City Council elects a Mayor for a two-year term from among the members of Council. The City Manager is the administrative head of the government with all departments reporting to him.

The City of Longview provides a full range of municipal services to its Citizens which include: police, fire, parks and recreation, equipment rental, community development, zoning and code enforcement, library, municipal golf course, transit, public works, city administration and facility maintenance.

The City of Longview employs approximately 290 full-time employees.

Our Community

The City of Longview with a population of 35,340 is the largest city in Cowlitz County. Longview is located at the junction of Interstate 5 and Washington State Highways 4, 411, 432 and 433. It is approximately 75 miles east of the Pacific Ocean, 128 miles south of Seattle, and 41 miles north of Portland, Oregon.

Longview is a planned city built by the Long-Bell Lumber Co. between 1919-1927. Long-Bell Lumber, a Missouri timber company, needed more timber in the 1920s to supply its large sawmills in Louisiana and Texas. The company purchased 70,000 acres of timber in southwest Washington from Weyerhaeuser Corporation and decided to build a new mill and town nearby. Construction of the new town began in 1922 under the direction of Long-Bell officials and was completed in 1927. The City of Longview was incorporated in 1924.

The showplace of our great community is Lake Sacajawea. It was a bog that had to be dredged when the city was built. Now, bridges and islands filled with perennials, azaleas and rhododendrons create the sense of a large garden at the lake. Clusters of lily pads encircle the lake's edge. The park also has a 3.7-mile path around it that is a favorite of walkers, runners and bicyclists year-round.



Longview's Mission Statement

To develop and implement strategies which protect and improve the quality of life in our city. These strategies are:

- ◆ Established on a broad base of community input and support
- ◆ Encouraging economic development
- ◆ Enhancing human and health needs
- ◆ Addressing the needs of our environment
- ◆ Supporting and enhancing a family atmosphere among city employees

It is also our mission to deliver services that are:

- ◆ The best that can be delivered within the financial constraints established by the Council
- ◆ The lowest possible unit cost
- ◆ Competitive in cost and at a competitive level of service with the private sector and other public agencies
- ◆ Innovative within an acceptable level of risk.